



University, Sydney, AU

[Press release: University, Sydney, AU](#)



World Trade Center 3, NYC, US

[Reference: World Trade Center 3](#)



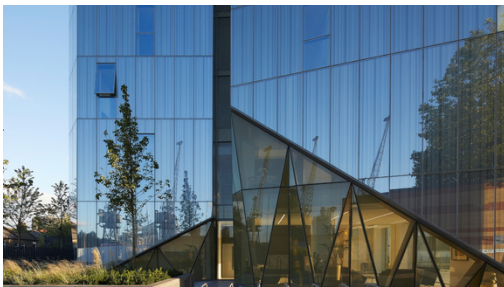
Midtown Jalisco, Guadalajara, MX

[Reference: Midtown Jalisco](#)



World Trade Center 3, NYC, US

[Reference: WTC, NYC](#)



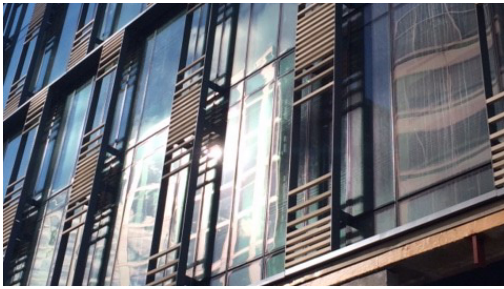
Dollar Bay, London, UK

[Reference: Dollar Bay](#)



Dal Mainz, DE

[Reference: Dal Mainz](#)



2100 K Street, Washington, US

[Reference: 2100 K Street](#)



School Building Horw, CH

[Reference: School Building](#)



Balustrades in Corporate Office, Richmond, AU

[Reference: Corporate Office](#)



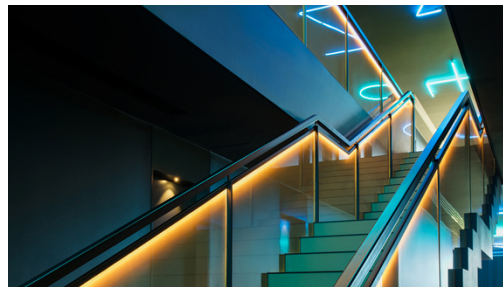
Skybridge, New York, US

- [Reference: Skybridge](#)
- [Additional information](#)
- [More details...](#)



Ginza Six, Tokyo, JP

[Reference: Ginza Six, Tokyo](#)



Jackalope Hotel, Merricks North, AU

[Reference: Jackalope Hotel](#)



Hyundai Motors R&D Center, Gyeonggi-do, KR

Reference: Hyundai Center



City Walk, Dubai, UAE

Reference: City Walk



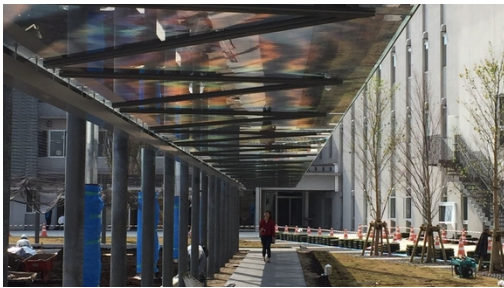
Nevada Labor Building, Reno, US

Reference: Nevada Labor Building



International Finance Center, Jersey, UK

Reference: Jersey Finance Center



Nerima School, Tokyo, JP

Reference: Nerima School



Goldin Financial Global Center, Kowloon Bay, HK

Reference: Goldin Financial Global Center



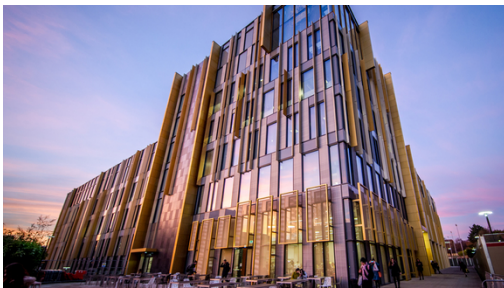
UBS Broadgate Elevators, London, UK

Reference: [UBS Broadgate Elevators](#)



University of Hertfordshire, Hatfield, UK

Reference: [University of Hertfordshire](#)



Library Birmingham, UK

Reference: [Library Birmingham](#)



Australian Post Office, Westin Melbourne, AU

Reference: [Australian Post Office](#)



Novartis Research Facility, Cambridge, US

Reference: [Novartis Research Facility](#)



Da Heng Building, Taichung, TW

Reference: [Da Heng Building](#)



Dun Laoghaire Library, Dublin, IR

Reference: [Dun Laoghaire Library](#)



Airport Keflavik, IS

Reference: [Airport Keflavik](#)



Georgstrasse, Hannover, DE

Reference: [Georgstrasse](#)



Construction company van Roey, Het Looi Rijkvorschel, BE

Reference: [Het Looi](#)



Animal Protection Office, Zurich, CH

Reference: [Zurich Animal Protection Office](#)



Swiss Railway Main Office Building, Bern Wankdorf, CH

Reference: [Swiss Railway Main Office Building](#)



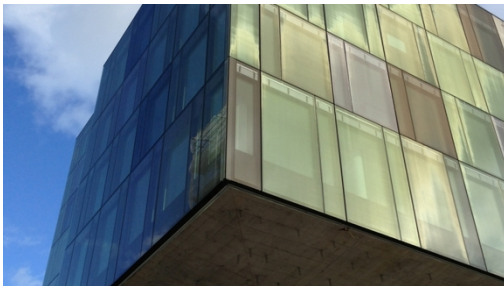
Europaallee 21, Construction Area C, Zurich, CH

Reference: Europaallee, Construction Area



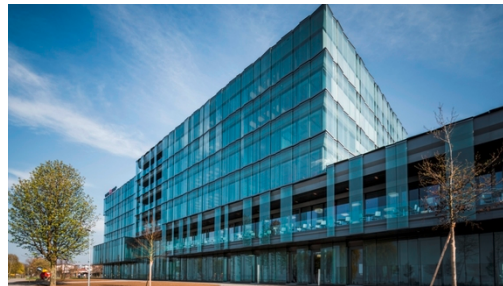
C Quadro, Executive Building, Udine, IT

Reference: C Quadro, Executive Building



Suurstoffi Offices, Rotkreuz, CH

Reference: Suurstoffi Offices



Würth Building, Rorschach, CH

Reference: Würth Building



10 Brock St, NEQ, Regent's Place, London, UK

Reference: Regent's Place, London



Crystal of sylvinite for BKK headquarters, Minsk, BY

Reference: Crystal of sylvinite for BKK



Prime Tower Room divider, Zurich, CH

Reference: Prime Tower Room divider



Prime Tower Ceiling, Zurich, CH

Reference: Prime Tower Ceiling



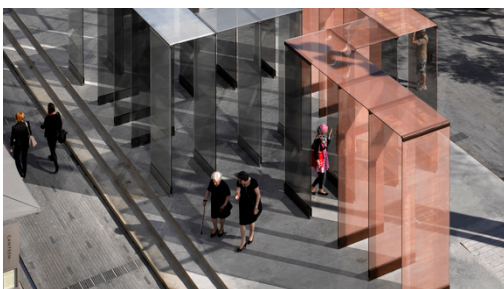
Fashion House, Madrid, ES

Reference: Fashion House Madrid



Haus der Stadtgeschichte, Heilbronn, DE

Reference: City Archive, Heilbronn



Design Festival, London, UK

Reference: London Design Festival